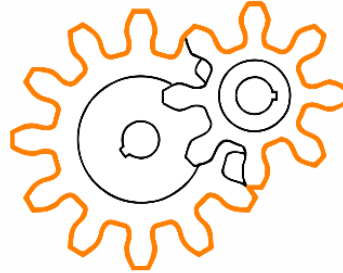




# Engenext Boundary Capture



## Step by Step Installation Guide

&

## User Manual For GStarCAD

### Table of Contents

<b>1</b>	<b>Installation</b> .....	<b>2</b>
1.1	Step 1: Download the software and unzip the file.....	2
1.2	Step 2: Run setup as an administrator.....	3
1.3	Step 3: Setup wizard and license agreement.....	4
1.4	Step 4: Preferred GStarCAD version and installation folder selection.....	5
1.5	Step 5: Installation and finish.....	6
<b>2</b>	<b>Trial Period and How to use EGBoundary</b> .....	<b>7</b>
2.1	Step 1: Trial period.....	7
2.2	Step 2: How to use 'EGBoundary' Command.....	8
2.3	Step 3: How to use 'Settings' Command.....	9
2.4	Step 4: How to use 'EGABOUT' Command.....	11
<b>3</b>	<b>Procedure For License Activation</b> .....	<b>12</b>
3.1	Step 1: Navigating to license activation window.....	12
3.2	Step 2: License Activation.....	13
3.3	Step 3: License Deactivation (Floating License Users Only).....	15
<b>4</b>	<b>Node Lock License Usage</b> .....	<b>16</b>
<b>5</b>	<b>Floating License Usage</b> .....	<b>17</b>
<b>6</b>	<b>Important Information to Remember</b> .....	<b>18</b>



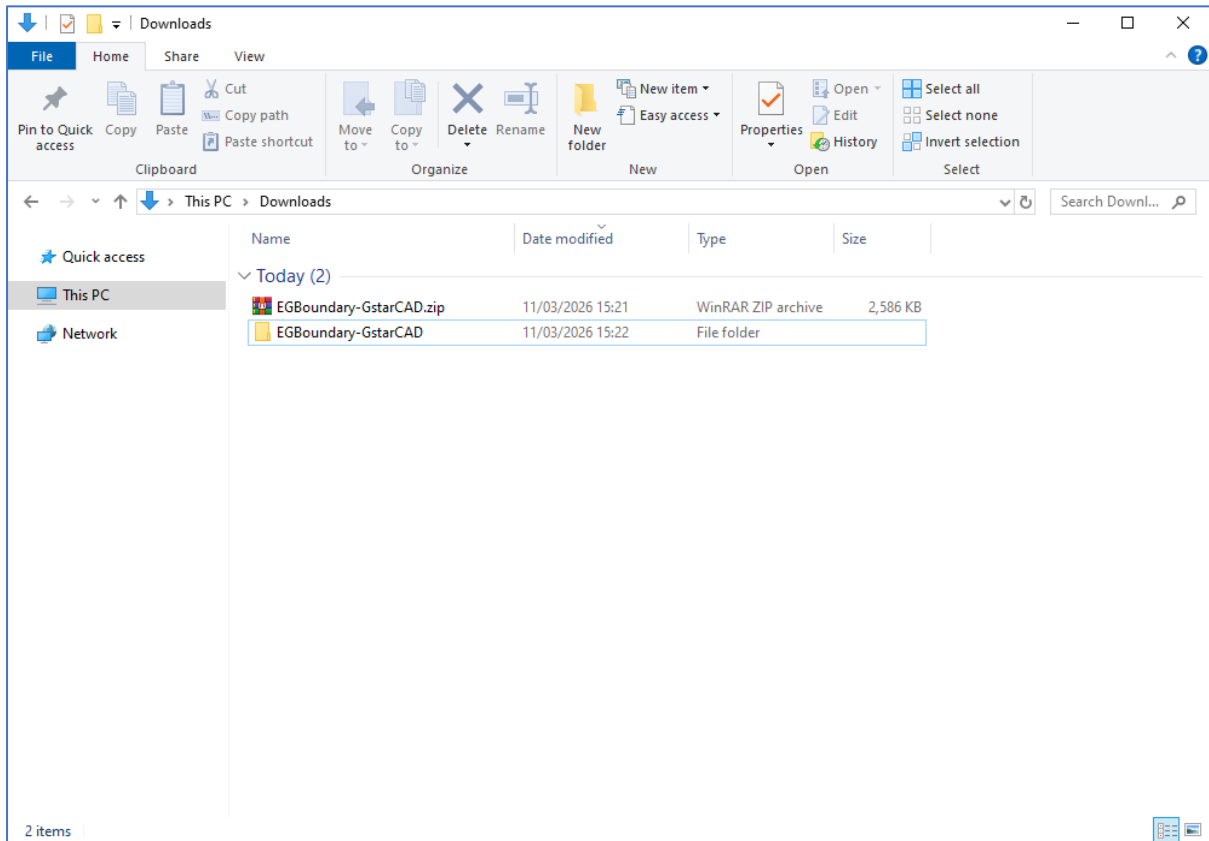
# 1 Installation

## 1.1 Step 1: Download the software and unzip the file

Download the **Engenext Boundary Capture For GStarCAD** from our official website: -

<https://engenext.com/pages/egboundary.html>

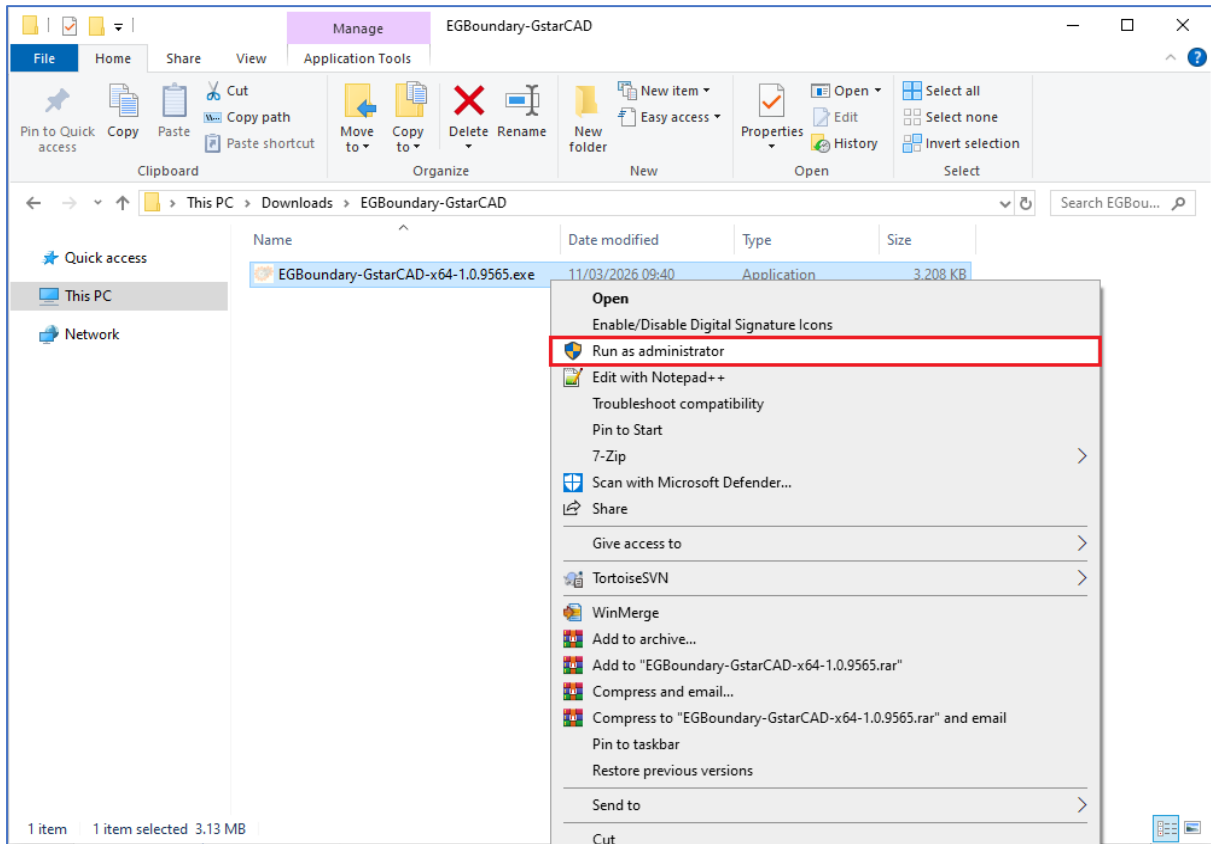
And unzip the file using any unzip tool. After unzipping the file, a folder will be created as shown below





## 1.2 Step 2: Run setup as an administrator

Open Folder EGBoundary-GStarCAD and run .exe file as an administrator



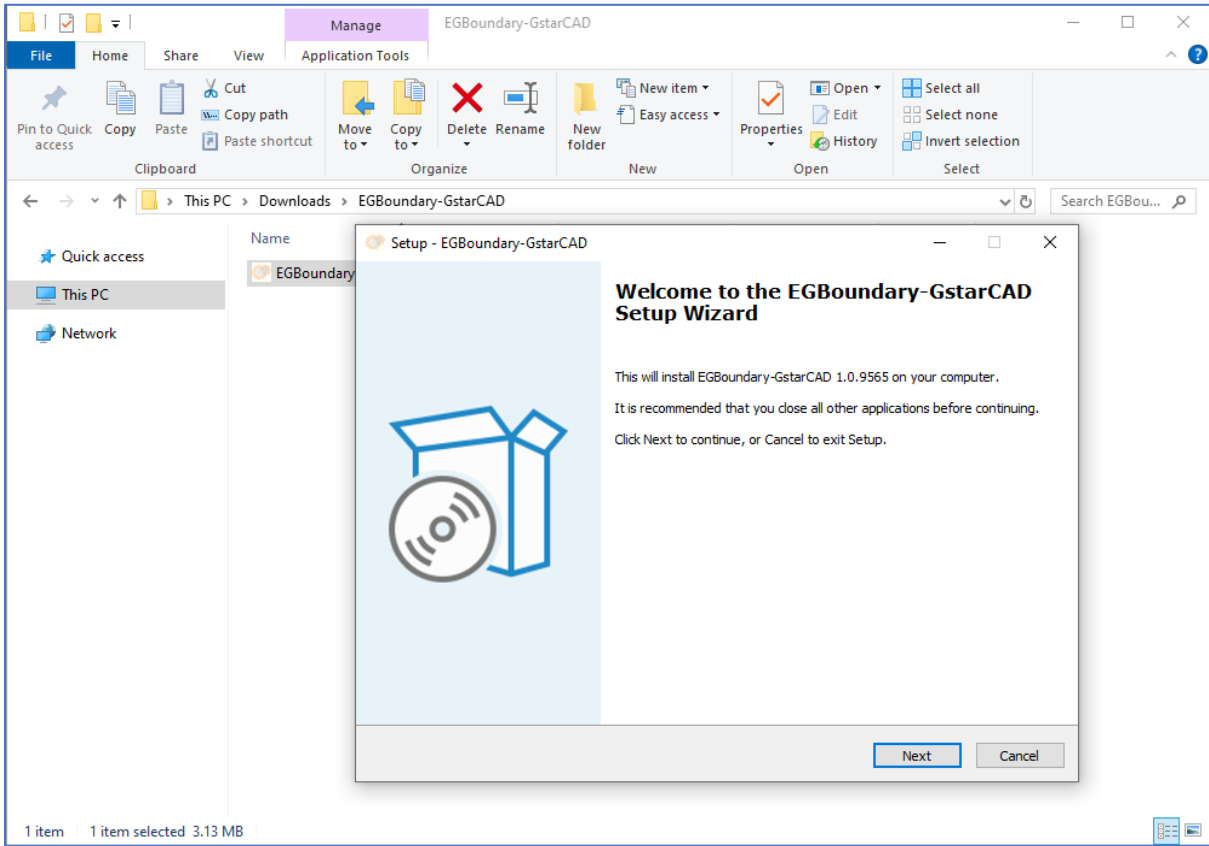
**Note: -**

If windows defender firewall protection dialogue appears saying unknown publisher select **More information --> Run anyway**

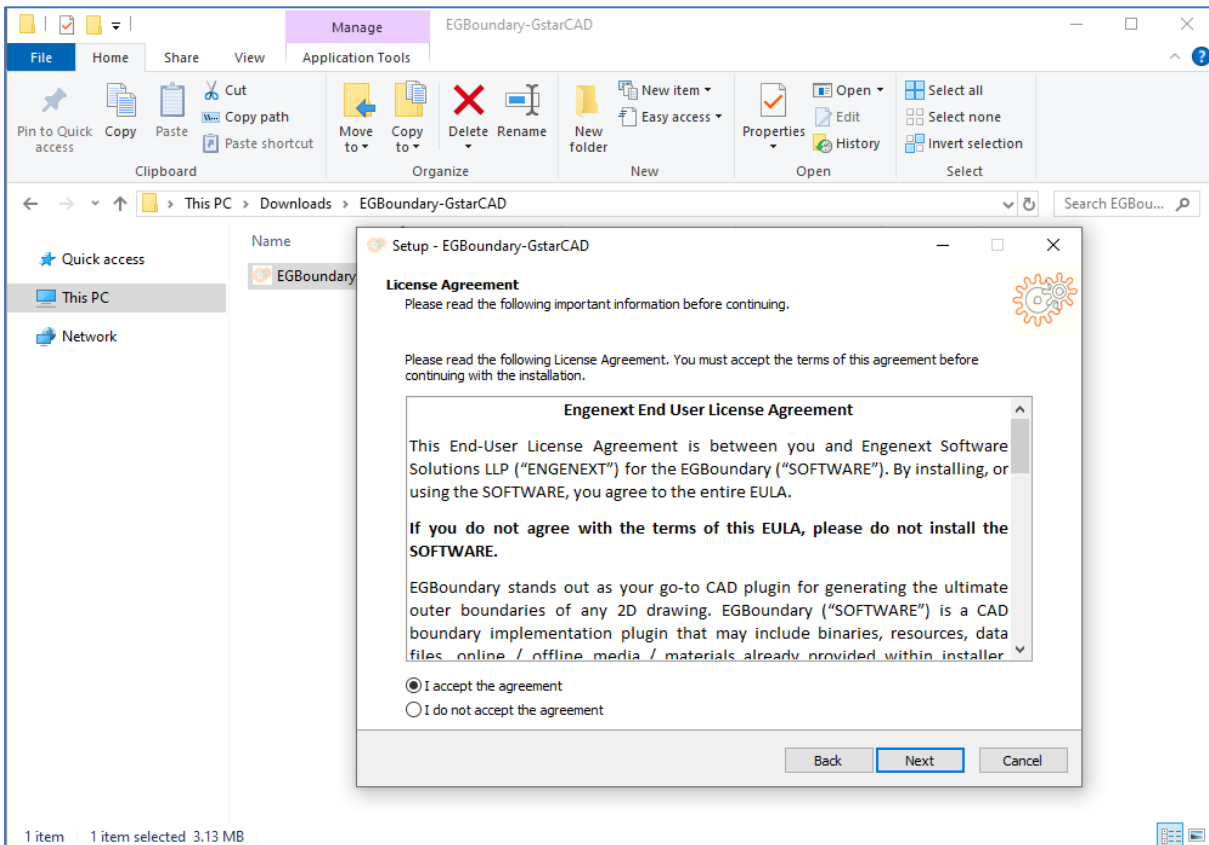


### 1.3 Step 3: Setup wizard and license agreement

A window saying 'Welcome to the EGBoundary-GStarCAD Setup Wizard' will popup, Click on next.



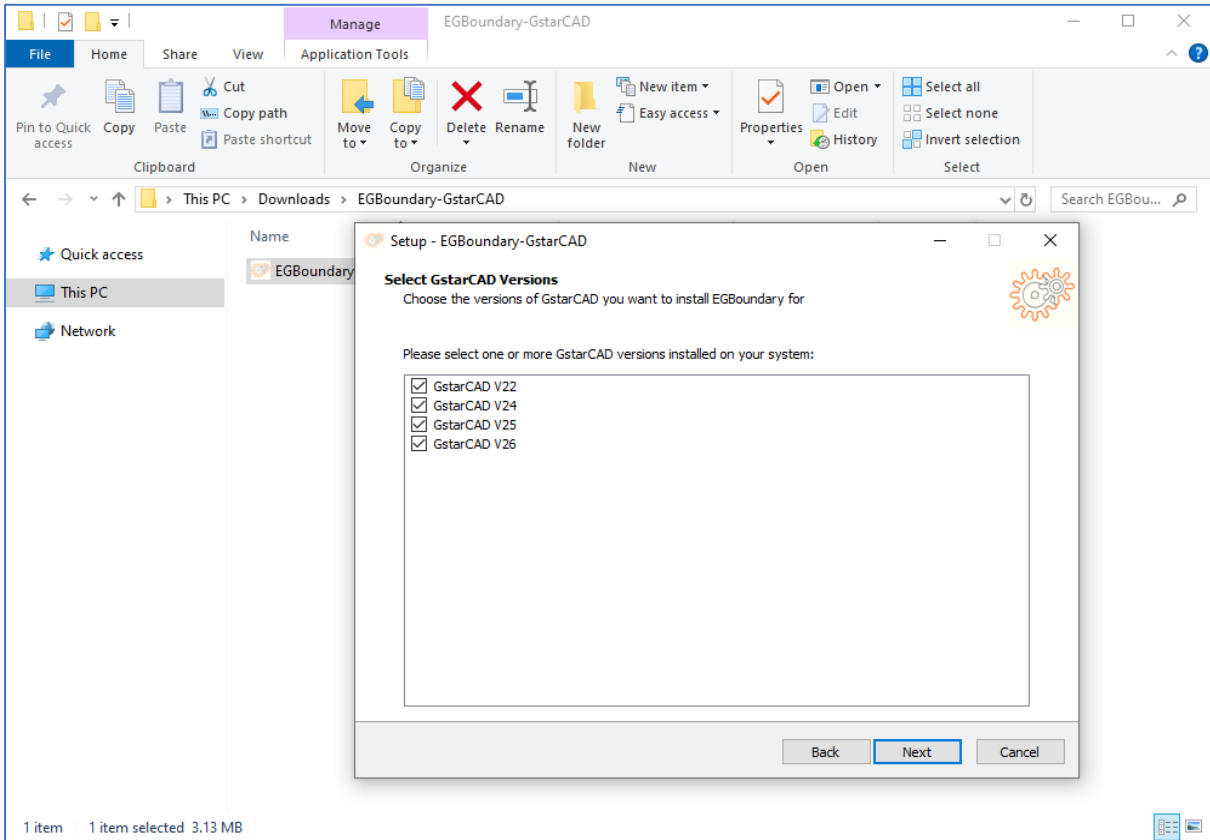
A license agreement window will pop up, after reading select 'I accept the agreement' and click next.



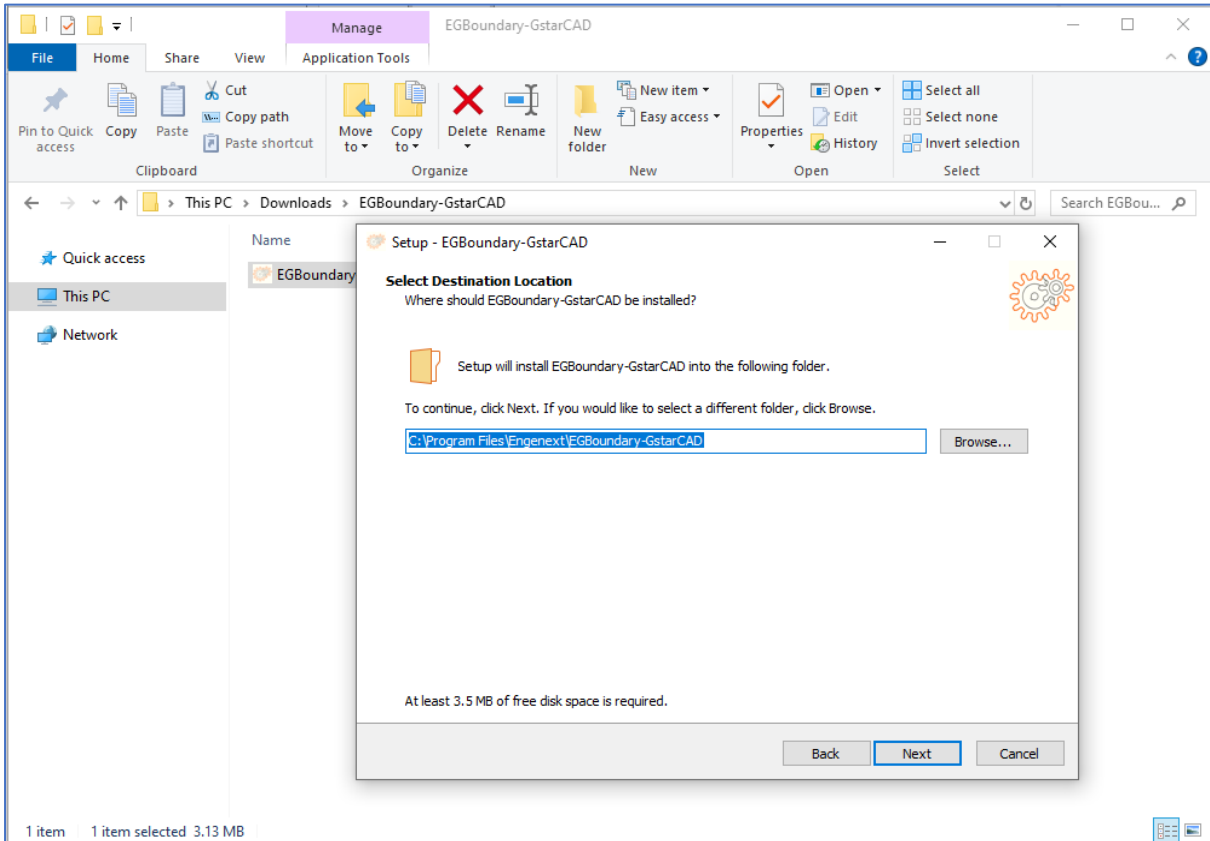


### 1.4 Step 4: Preferred GStarCAD version and installation folder selection

A window with list of installed versions of GStarCAD will appear, Select at least one GStarCAD version.



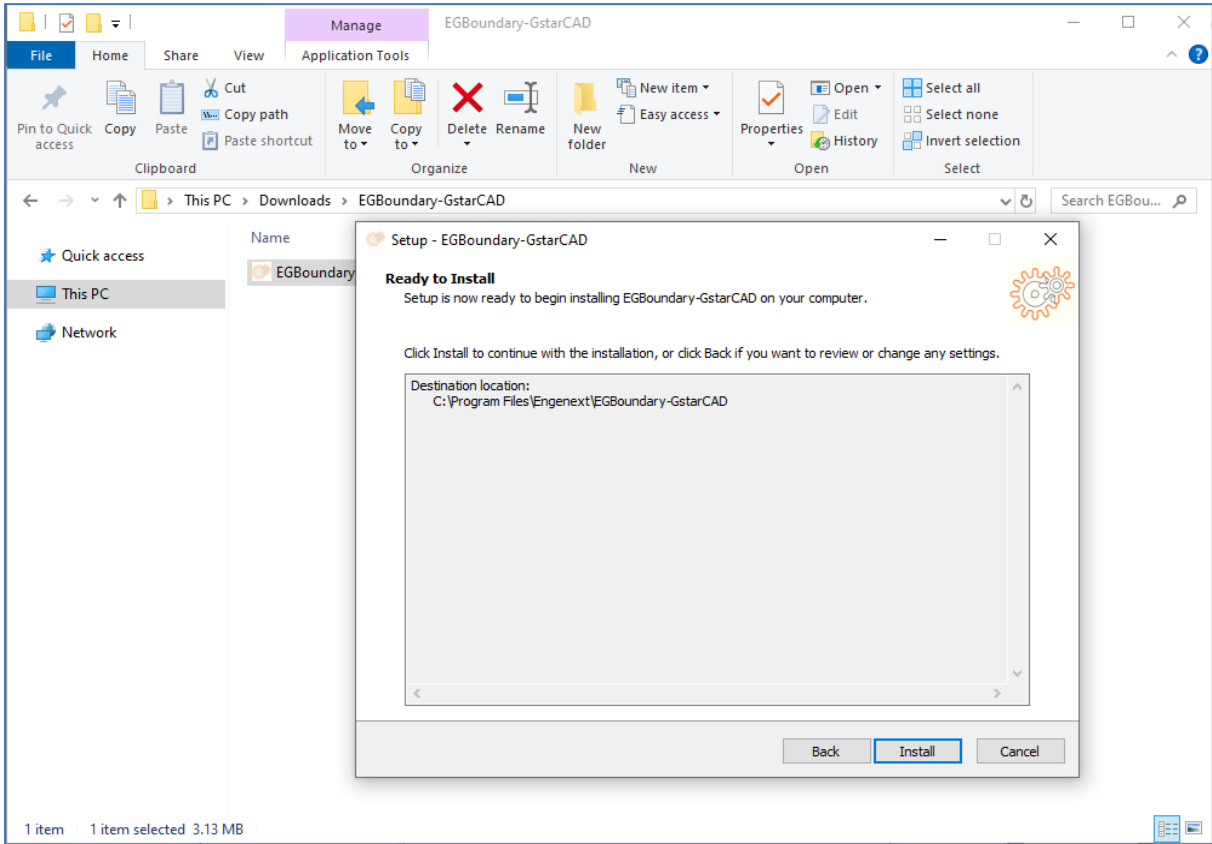
Select installation folder (recommended to keep default) for installing software and click next.



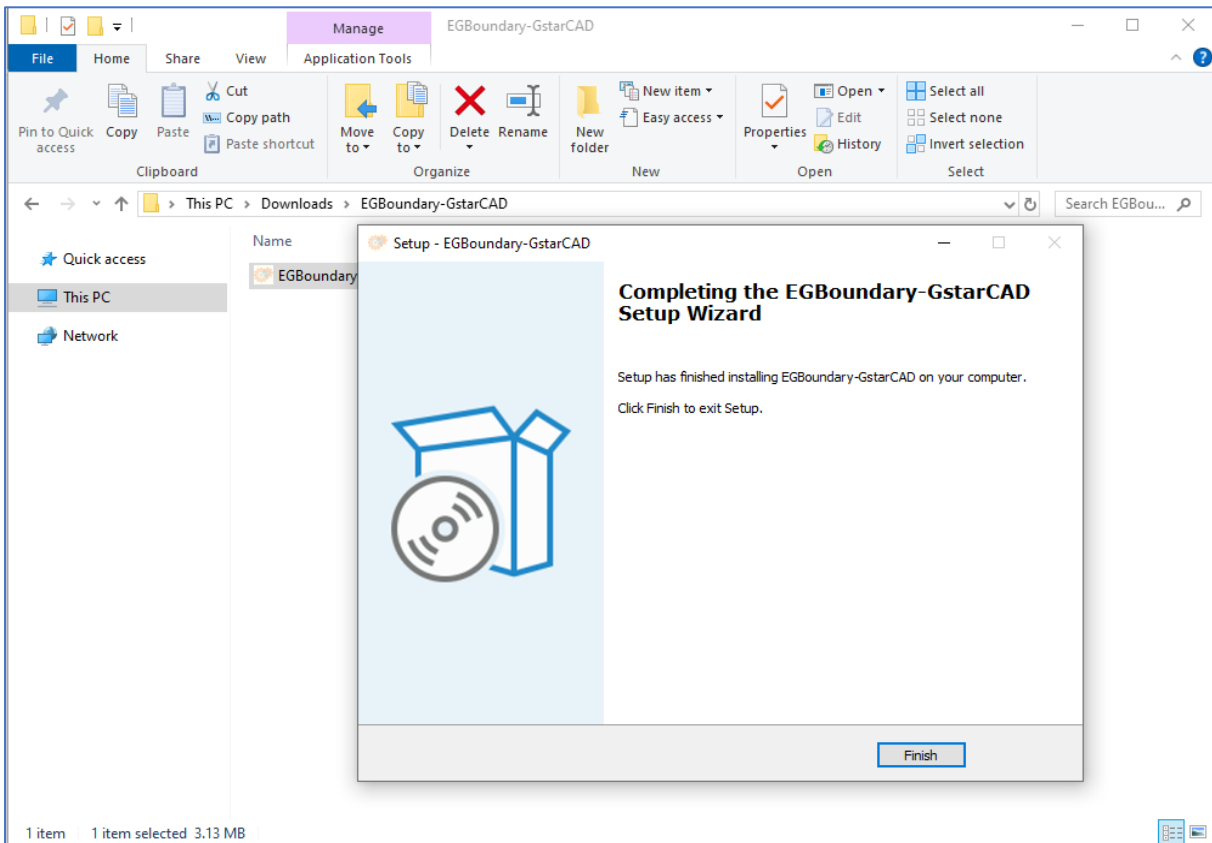


### 1.5 Step 5: Installation and finish

After selecting the preferences click **Install**, the setup will install **Boundary Capture** to specified path



Click **Finish** to complete the installation, the Boundary Capture is now ready to use from GStarCAD.



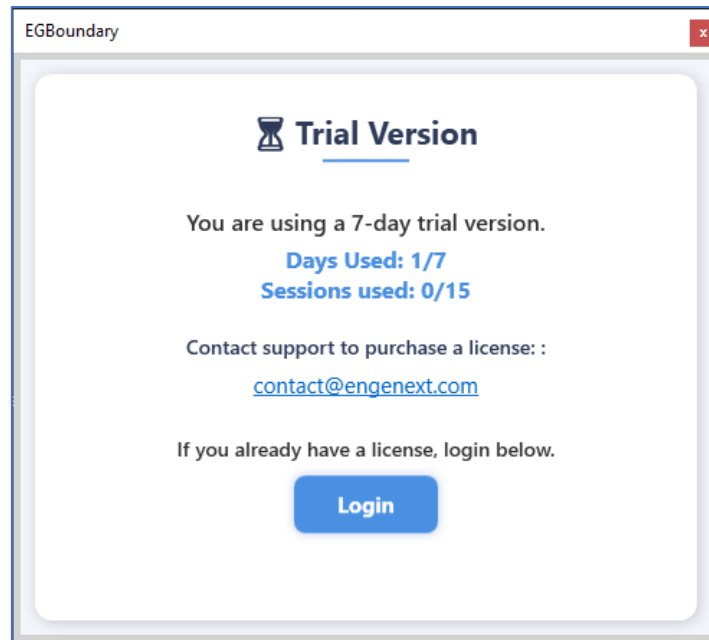


## 2 Trial Period and How to use EGBoundary

### 2.1 Step 1: Trial period

After successful installation of the EGBoundary software, start any of the GStarCAD version selected during installation and click new drawing.

Enter **'EGBOUNDARY'** (Case Insensitive) on the command line and press enter this will activate **free trial** of the software **for the 7 days or 15 sessions from the date of installation.**



**Note:** The dialog box displayed above will pop up on starting GStarCAD and only after **'EGBOUNDARY'** command is entered.

To purchase a license please reach out to [contact@engenext.com](mailto:contact@engenext.com)

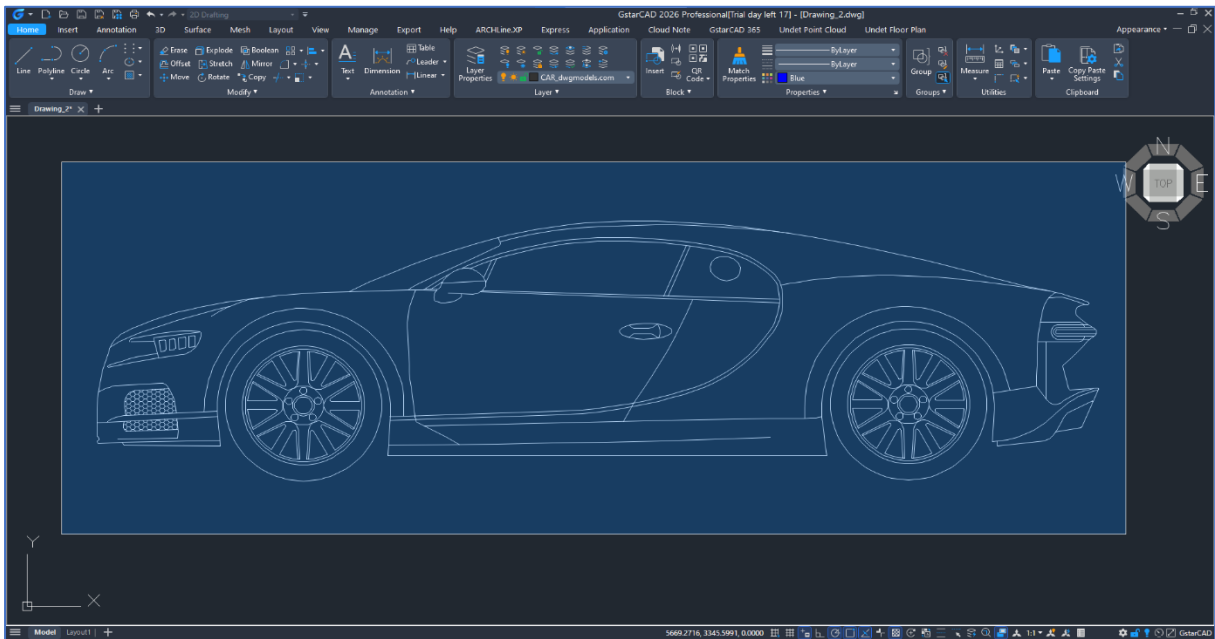
Types of Licenses supported:

- 1) Node Lock Subscription Type
- 2) Node Lock Perpetual Type
- 3) Floating Subscription Type
- 4) Floating Perpetual Type

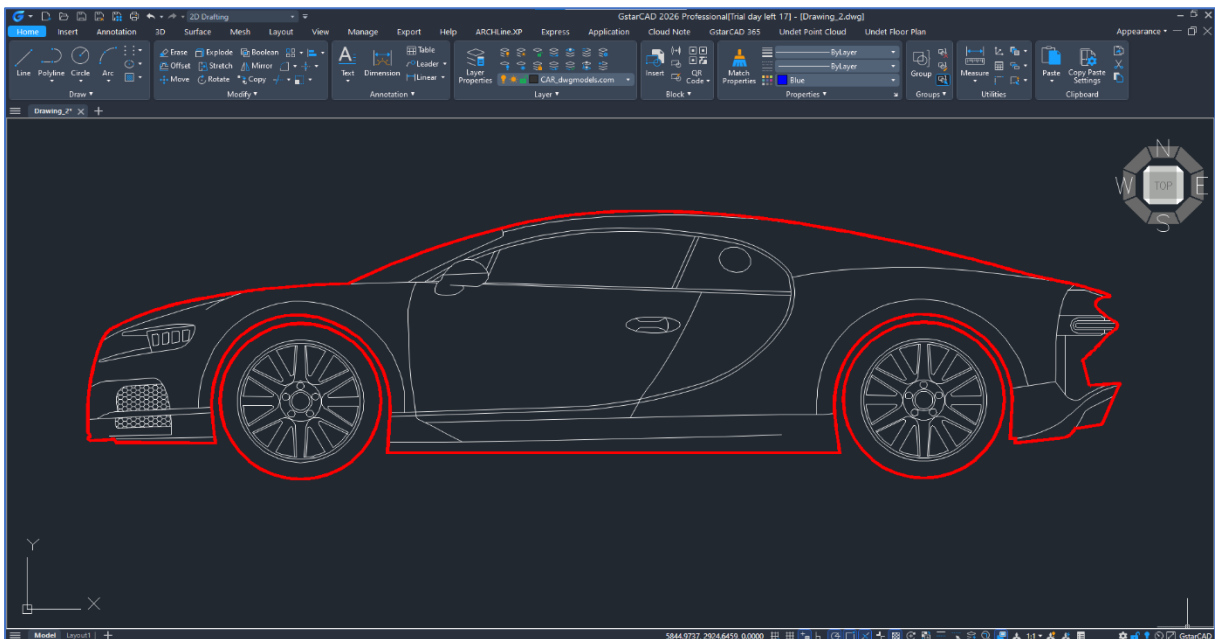


## 2.2 Step 2: How to use 'EGBoundary' Command

To use the **EGBoundary** command, first open the drawing in which you want to create a boundary. Type **EGBOUNDARY** (case-insensitive) in the command line, then select the area or the entire drawing.



Press enter to generate the boundary.



Additional Features:

- Supports multiple island detection and extracts boundaries of multiple entities within a single selection as shown in above picture for body and tires.
- Automatic tolerance calculation for improved accuracy and faster processing.
- Layer setting option for current layer selection.
- Color setting option with **BYLAYER** support and selectable line types (Continuous, Dotted, etc.).
- Wipeout generation feature.
- Access the "EGBOUNDARY" command using the alias "EBDR".

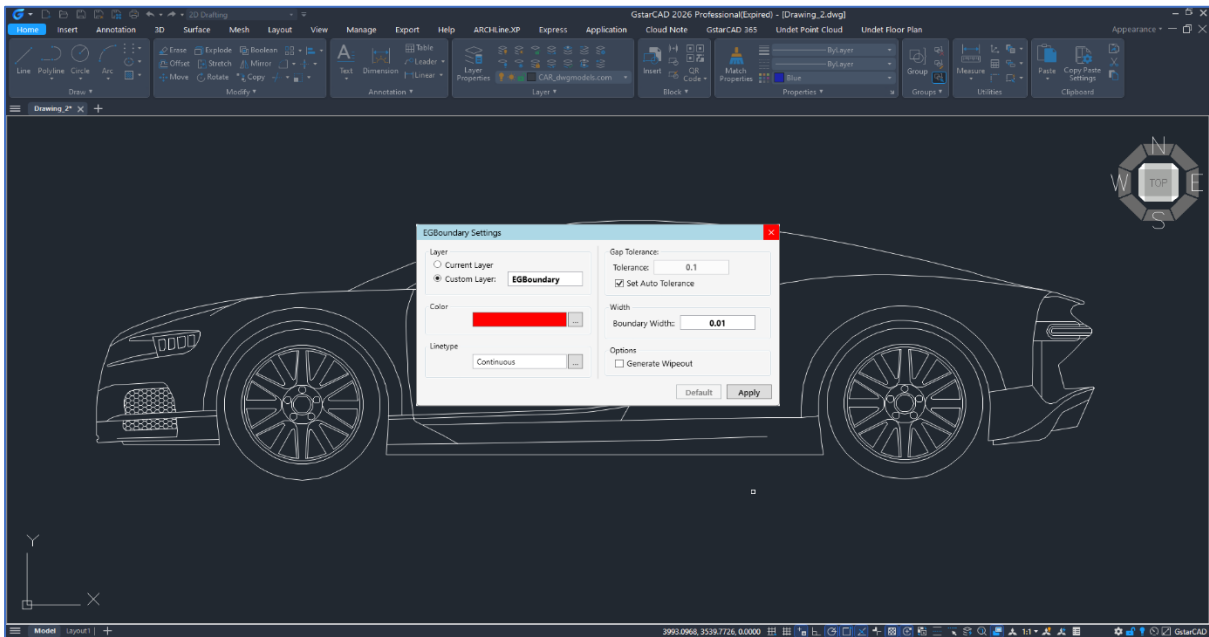


### 2.3 Step 3: How to use 'Settings' Command

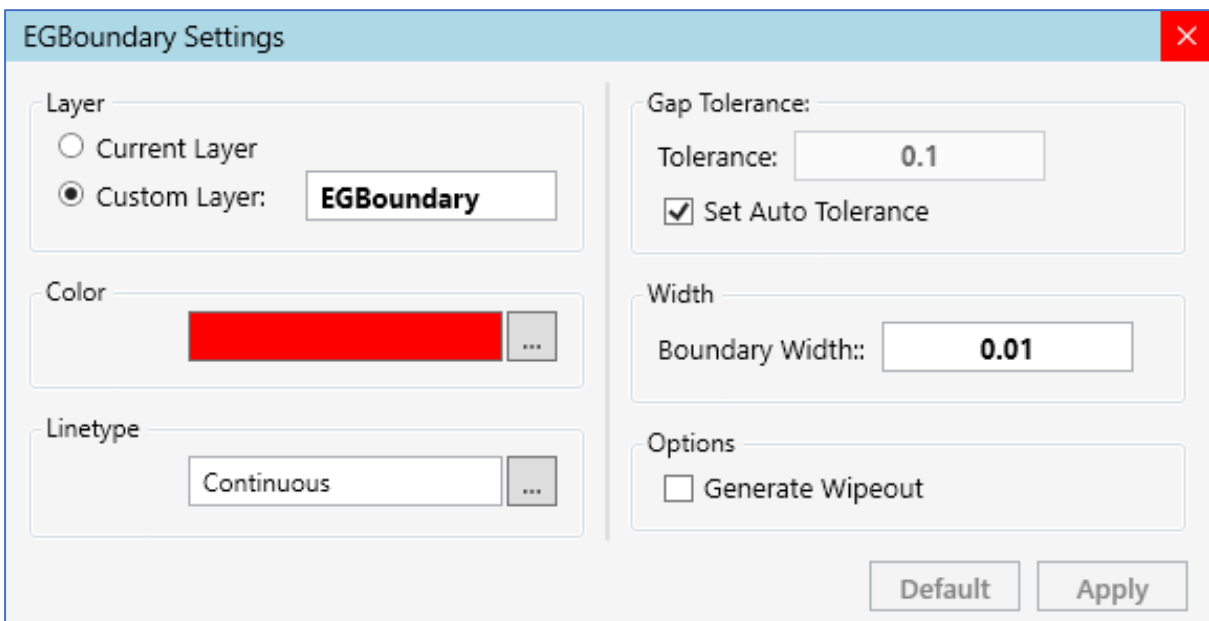
To help our users customize each boundary according to their preferences we have provided the 'Settings' command.

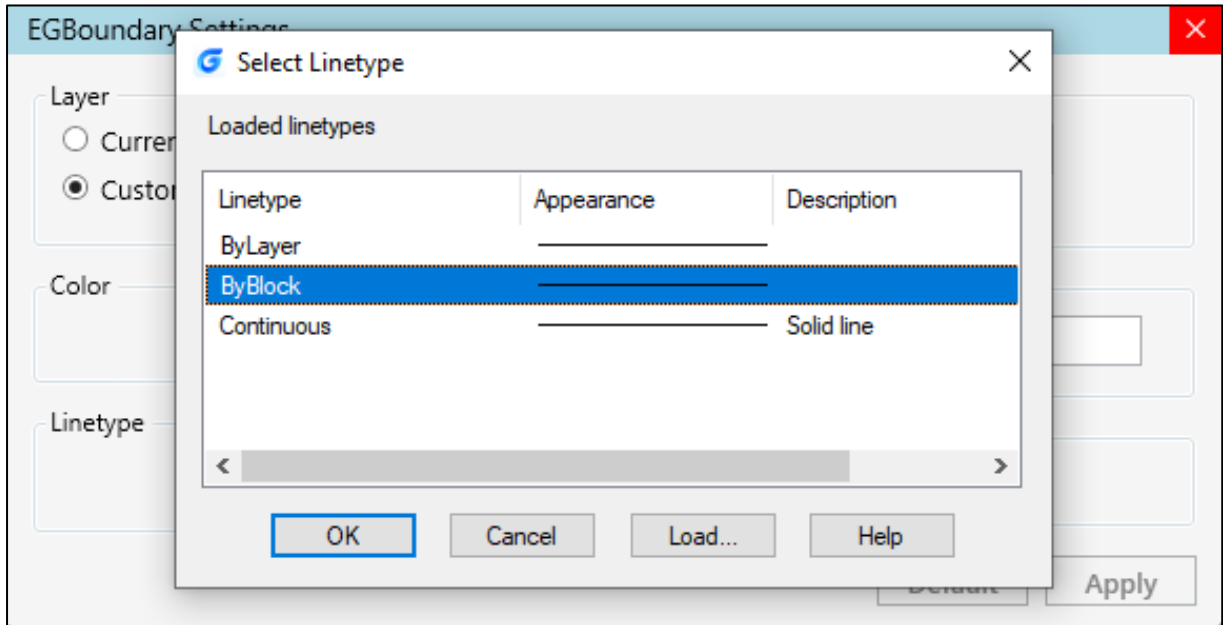
#### Steps:

1. To use 'Settings' command first type 'EGBOUNDARY' on the command line and press enter which will ask to select the objects.
2. Before or after selecting the objects type 'S' (Case Insensitive) on command line and press enter, a dialogue will appear on screen with multiple settings.

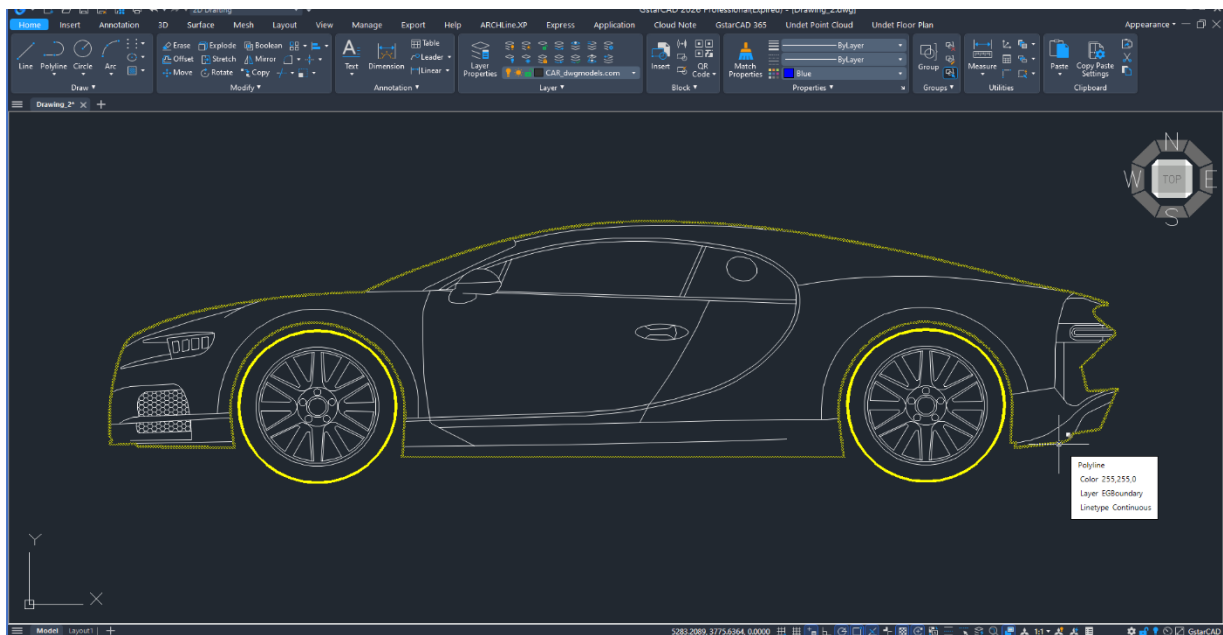


3. Settings include multiple customization options such as color selection, Boundary width selection, Custom layer name, Line type, wipeout as well as manual gap tolerance (The automatic tolerance is checked by default uncheck the box to use manual tolerance).





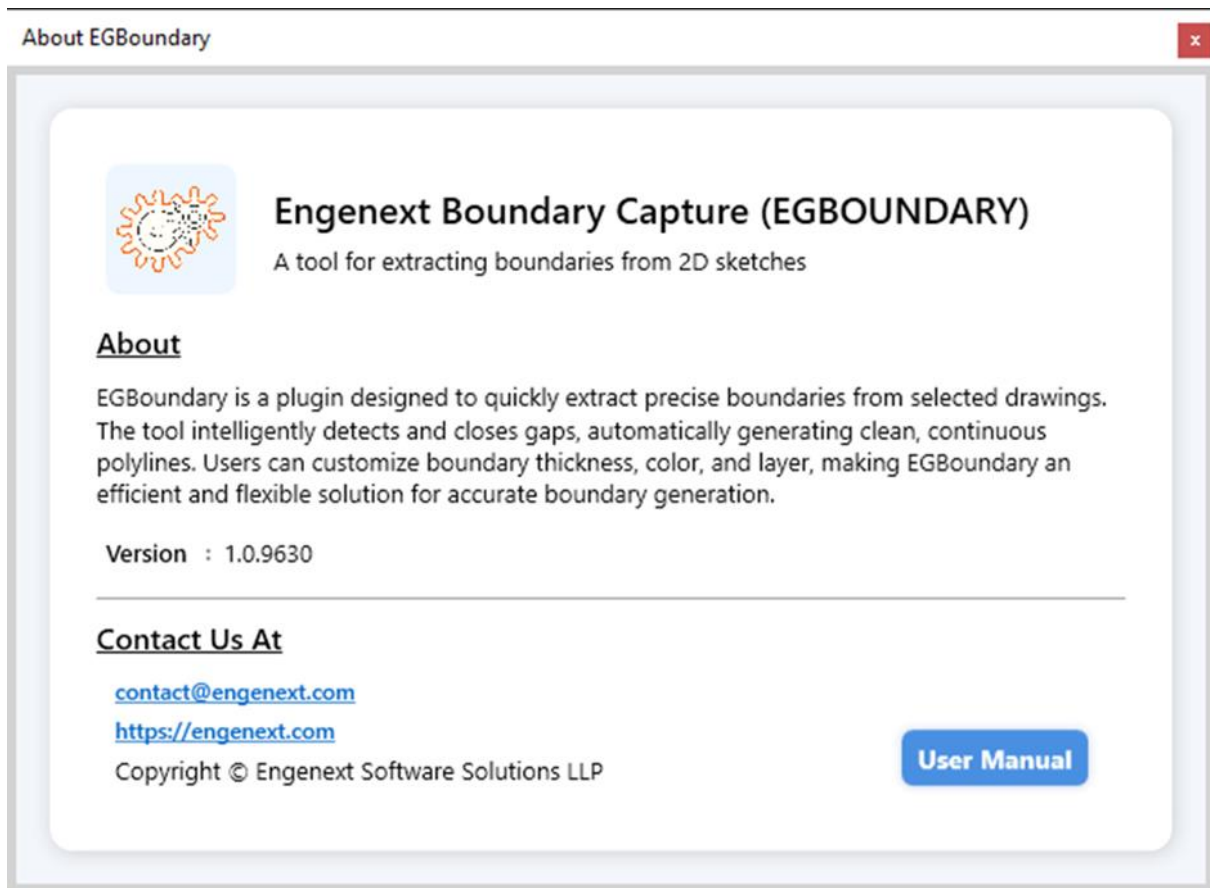
4. After adjusting the settings as per requirements click Apply to apply the changes, the Window will disappear then select the entities and press enter to calculate the boundary Using custom settings.





## 2.4 Step 4: How to use 'EGABOUT' Command

As the name suggest 'EGABOUT' command contains information about the programme, Version Number, License Type, Lock Type, contact details and brochure of the software for trial mode, the license information will be displayed in the same dialogue once license is activated. Just type 'EGABOUT' (Case Insensitive) to access the information. A user Manual button is also provided in the same dialogue.



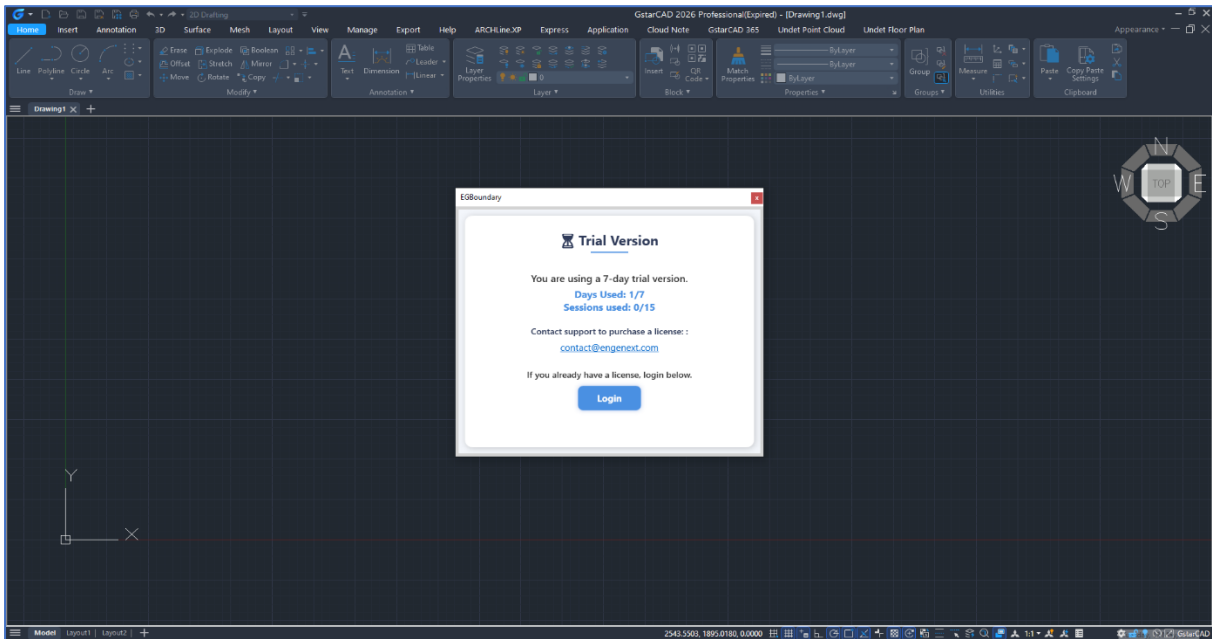


### 3 Procedure For License Activation

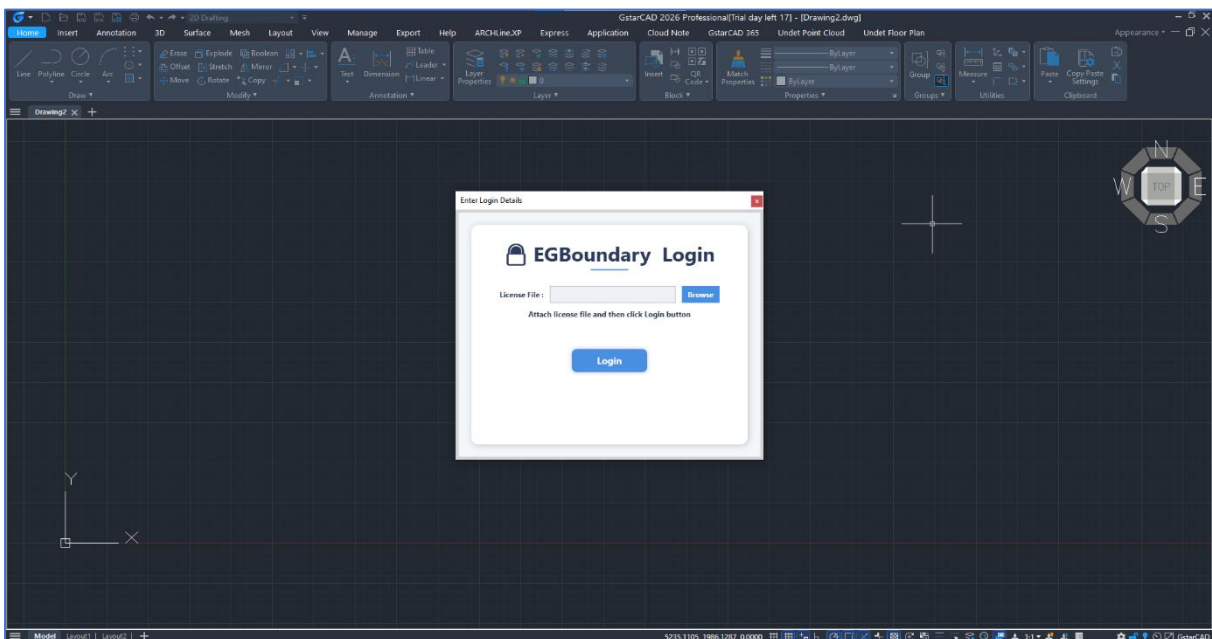
#### 3.1 Step 1: Navigating to license activation window

After purchasing the license, a file containing license key will be sent to mail address used while purchasing the license. Save the license file to any preferred location and follow procedure below to activate the license.

Start GStarCAD, click new drawing, enter 'EGBOUNDARY' on command line a dialogue box will appear as shown below



Click login button, EGBoundary Login dialogue will pop up asking for the license file.

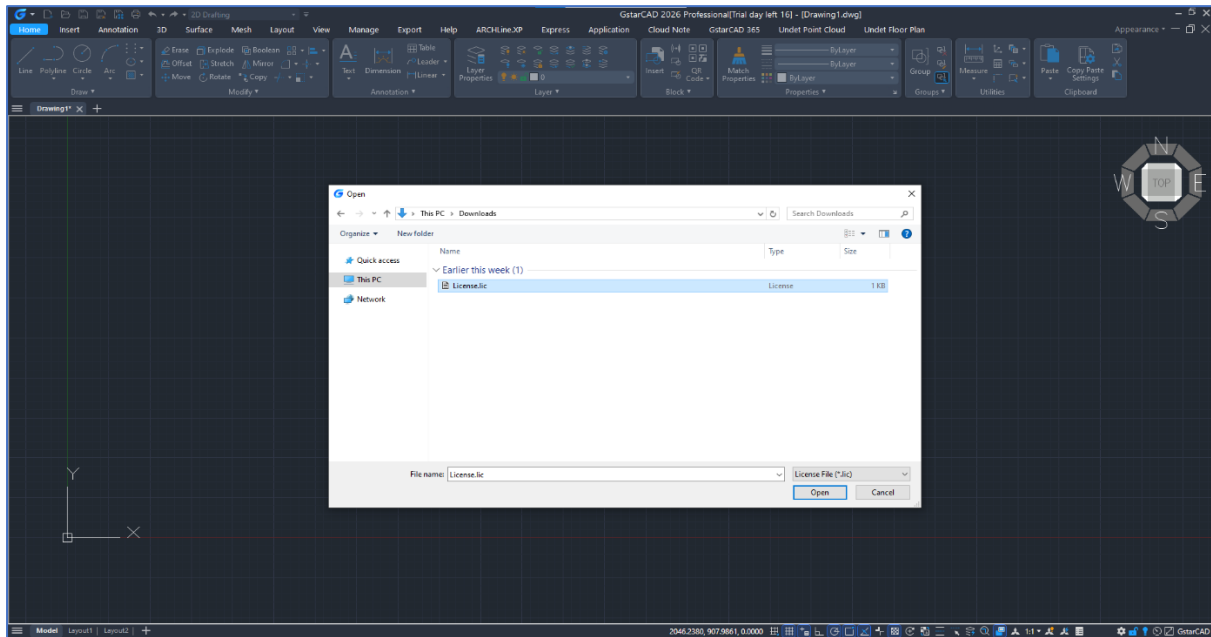


**Note:** -The trial version dialogue will be shown only once per day, if you miss out the login on this dialogue just enter 'EGLOGIN' (Case insensitive) on command line and the same EGBoundary Login dialogue will pop up

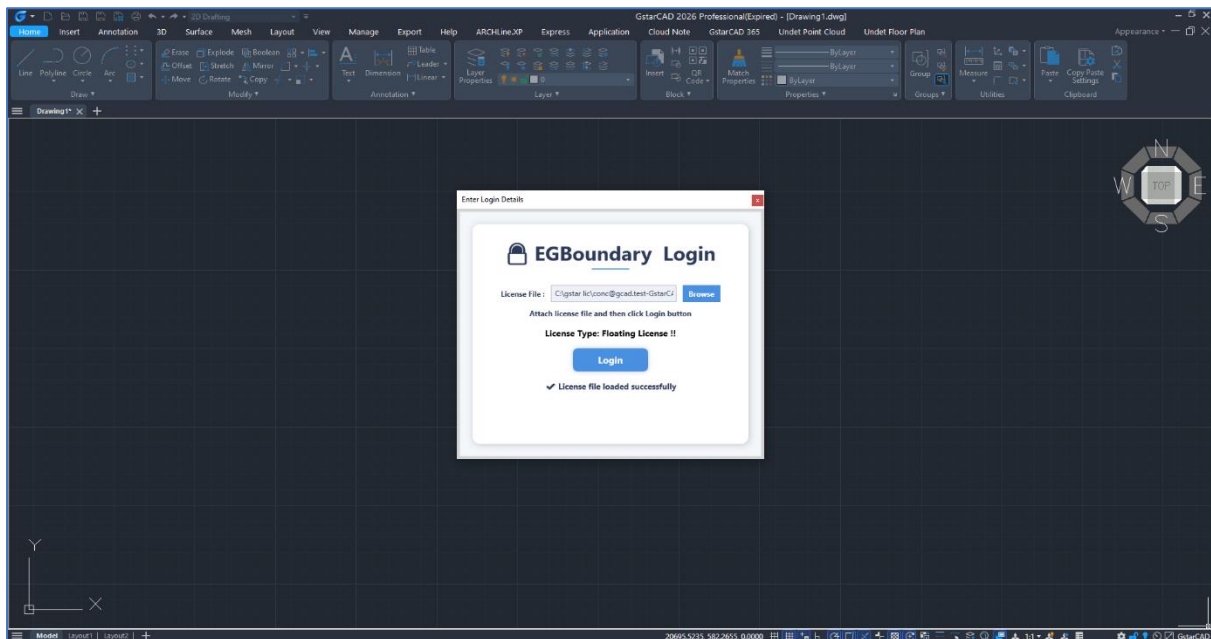


## 3.2 Step 2: License Activation

To activate the license, click **Browse** and choose the path of license file saved from the email we sent.



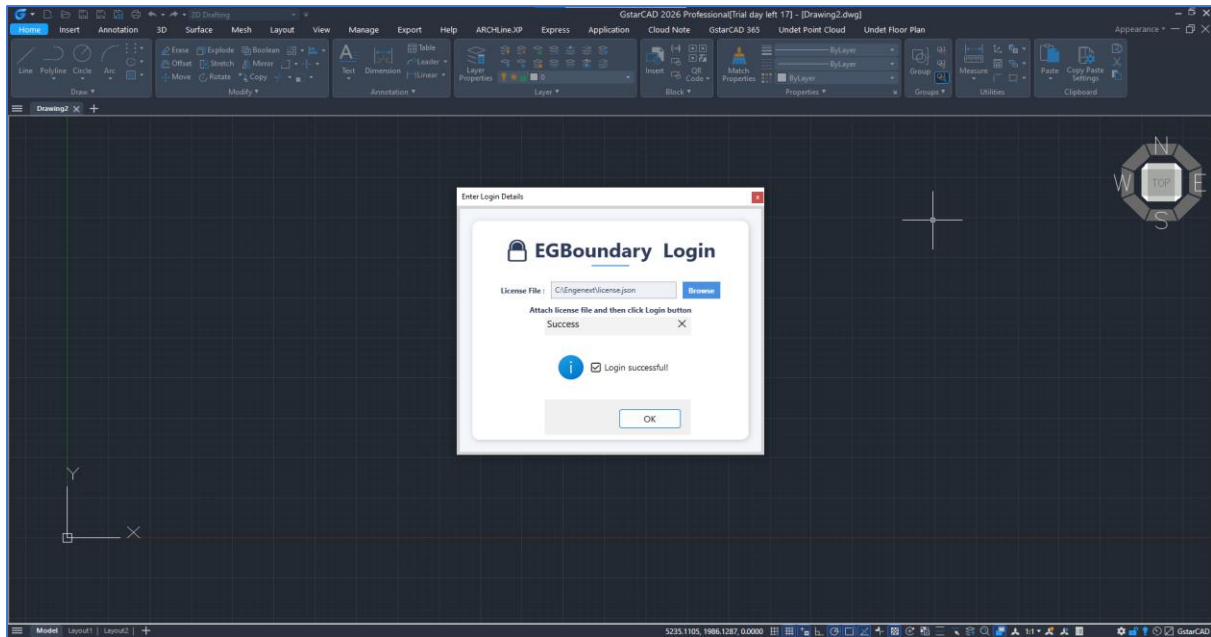
Once the correct license file is loaded it will show 'license file loaded successfully' with license type as shown below.



**Note:** - License activation procedure will remain exactly same for all the license type i.e. node-locked as well as floating.



Click Login, it will validate the license key and a dialogue saying “Login successful” will appear as shown in the image below

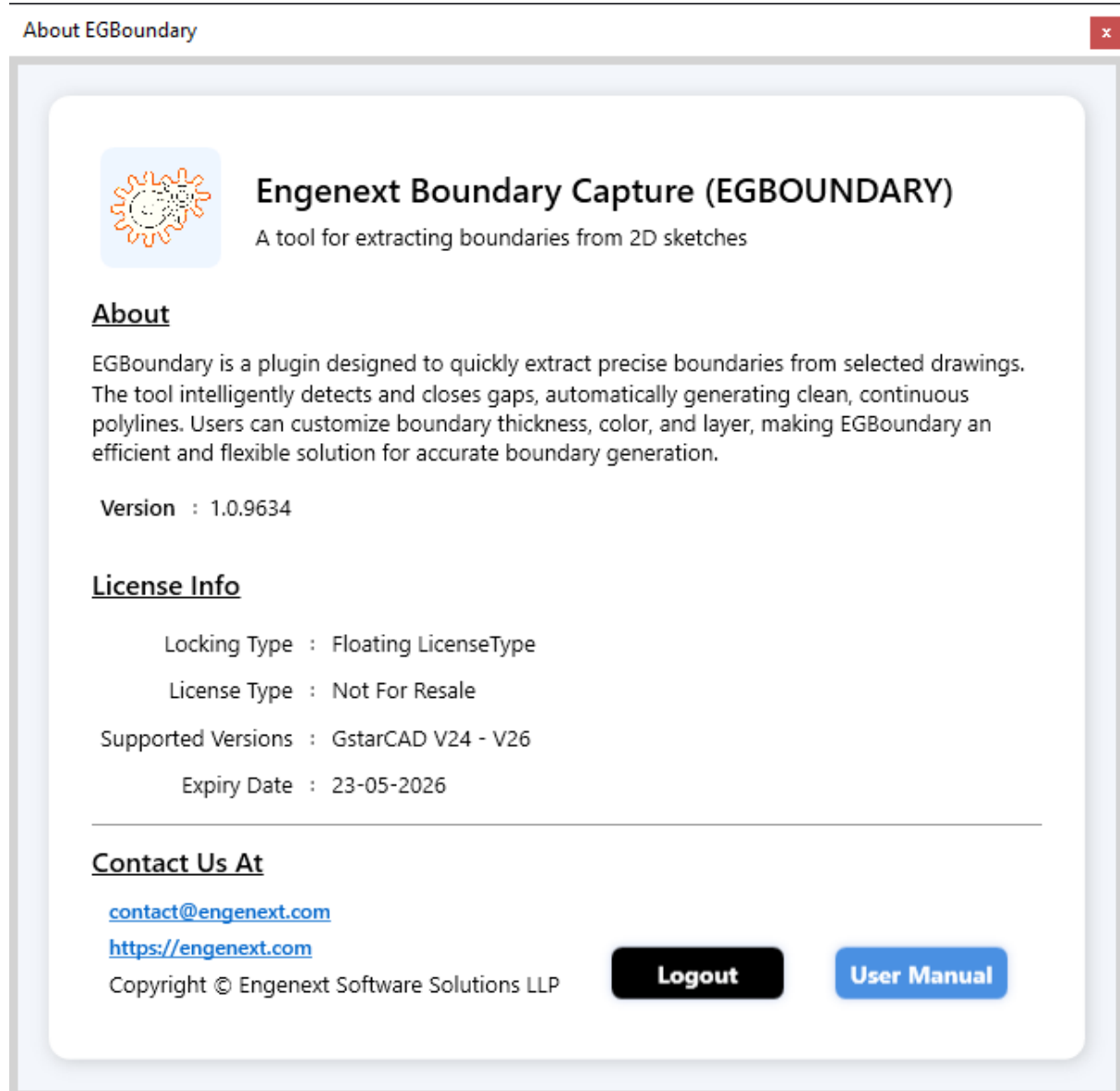


Click ok, the dialogue box and login window will disappear and the license activation procedure is now successfully completed.



### 3.3 Step 3: License Deactivation (Floating License Users Only)

License Deactivation functionality is only provided for floating license type; to make the license available for other devices it is necessary to float the license, to do so type “**EGABOUT**” (Case Insensitive) on command line a window will pop up with logout button. Click “**Logout**” button a popup saying logout successful will appear.



**Note:** - The data shown in the above image is for demonstration purpose only. The data will change according to the license purchased.



## 4 Node Lock License Usage

- Node-Locked License is permanently bound to a single system and can only be used on the device where it was originally activated.
- Once activated, the license is securely associated with the machine configuration and cannot be manually copied, transferred, deleted, or reused on another system.
- EGBoundary supports offline usage for a maximum duration of 72 hours. After this period, the application must reconnect to the internet to verify and refresh the license status.
- It is designed for dedicated single-machine usage and includes hardware-based locking mechanisms to prevent unauthorized sharing or reuse across multiple devices.

For example:

1. License activated on **PC A**
  2. The same license cannot be activated or used on **PC B**
  3. Reinstalling or copying license files manually will not transfer the activation
- EGBoundary provides an option to migrate from a **Node-Locked License** to a **Floating License** when multi-device flexibility is required. (not vice versa)
  - If you wish to migrate your license type from **Node-Locked License** to a **Floating License**, please contact the EGBoundary support team for assistance.

**Important:**

Migration from a Node-Locked License to a Floating License is permanent.

Once the migration is completed:

1. The existing Node-Locked License will be **fully revoked and deactivated**
  2. The Node-Locked License cannot be **restored or reused**
  3. License usage will thereafter follow **Floating** License rules and limitations
- We recommend carefully evaluating your workflow requirements before requesting a migration. If you need further clarification regarding Node-Locked or Floating licensing, please contact the EGBoundary support team.



## 5 Floating License Usage

- Floating License allows usage across multiple systems based on the number of floating seats purchased. Each active seat can only be used on one device at a time.
- For example, if the license is currently in use on **PC A**, the same license cannot be activated simultaneously on **PC B**. To use the license on another device, you must first release it from the currently active system.
- We strongly recommend manually logging out from the active device before switching to another system. This immediately frees the license for use on a different machine.
- EGBoundary also includes an automatic session timeout mechanism. If CAD application is closed without logging out from EGBoundary, the active session will automatically expire after approximately **2 minutes**. Once the session expires, the license becomes available for activation on another device.

For example:

1. User logs in and uses the license on **PC A**
  2. CAD application is closed without performing a logout
  3. After approximately **2 minutes**, the license is automatically released
  4. The same license can then be activated on **PC B**
- Automatic license release will function correctly only if the target device (for example, PC B) has previously completed a successful login and activation setup.
  - To avoid delays or session conflicts, manual logout is always the preferred method when switching devices. If you require additional clarification regarding Floating License behavior, please contact the EGBoundary support team.



## 6 Important Information to Remember

When activating the license, please consider the following points:

- If the **Node-Locked Mode** license is purchased, once it is registered to a specific device, it **cannot be transferred, revoked, or reassigned**.
- If the **Floating Mode** license is purchased, it can be registered to any number of devices but it will work on any one device at a time, it **can be transferred to other device after logging out from the active device**.
- Activation or deactivation (for Node lock and Floating licenses) requires a stable internet connection. Offline usage is permitted only after successful activation solely for Node Lock users.
- Any attempt to modify, duplicate, bypass or tamper with the license mechanism will result in **immediate license termination** without refund.
- Floating licenses should be used through approved systems or login credentials. Sharing activation files or keys outside the organization is strictly prohibited.
- If you wish to change the license type from Node Lock to Floating type, then **Node Lock license will be completely revoked** for that particular machine. We do not support any license type change from Floating to Node Lock license type.
- The handling, storage, and safekeeping of the license file are solely the responsibility of the owner. Engenext is not liable for lost, deleted, or damaged license files. License cancellation, regeneration, or support related to a lost license file will incur additional charges.
- The license will remain valid **only while the host application is supported**. When GStarCAD discontinues support for a particular version, the Boundary Capture will automatically stop working on that version.
- In case of any **hardware or software failure** that makes device inoperable, please contact the support for assistance with license-related matters.
- For purchasing of the license and queries reach out to [contact@engenext.com](mailto:contact@engenext.com)
- For support and assistance with license-related or any other matters reach out to [support@engenext.com](mailto:support@engenext.com) .